

## Rabbit anti human/mouse pVEGFR-2 (pTyr1175)

### ORDERING INFORMATION

<b>Catalog No:</b>	<b>pAP-0001</b>
<b>Size:</b>	<b>50 µl</b>
<b>Storage:</b>	<b>-20°C</b>
<b>Immunogen:</b>	<b>synthetic phospho-peptide corresponding to residues surrounding Tyr1175 of hVEGFR2</b>
<b>IgG Type:</b>	<b>Rabbit IgG</b>
<b>Applications:</b>	<b>WB &amp; IHC</b>
<b>Species</b>	<b>Human &amp; Mouse</b>

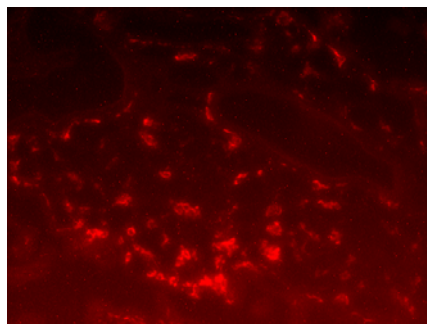
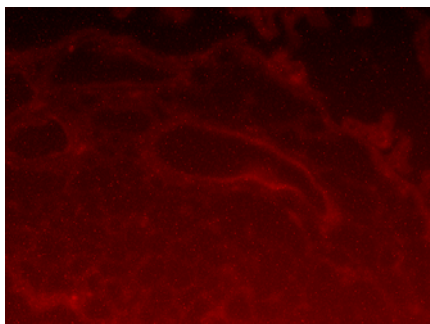
**Preparation:** The antibodies are produced by immunizing rabbits with a synthetic phospho-peptide (KLH-coupled) corresponding to residues surrounding Tyr1175 of human VEGF receptor-2. Antibodies are purified by protein A and peptide affinity chromatography.

**Formulation and storage:** Supplied in TBS (pH 7.4), 100 µg/ml BSA, 50% glycerol and less than 0.09% sodium azide. Store at -20°C.

**Specificity/Sensitivity:** Phospho-VEGF Receptor-2 (Tyr1175) Rabbit polyclonal antibody detects phospho-VEGFR-2 proteins in both human and mouse tissues.

### Applications:

- |    |                                       |             |
|----|---------------------------------------|-------------|
| 1. | Western blot                          | Yes (1:500) |
| 2. | Immunohistochemistry (Frozen section) | Yes (1:50)  |



Immunofluorescent staining of pVEGFR2: Acetone fixed human placental tissue specimen were subjected to immunofluorescent staining using pAP-0001. Note the endothelial specific positive signal in human placental tissues (right panel), while no positive signal is observed in adjacent section when primary antibody is omitted (left panel).